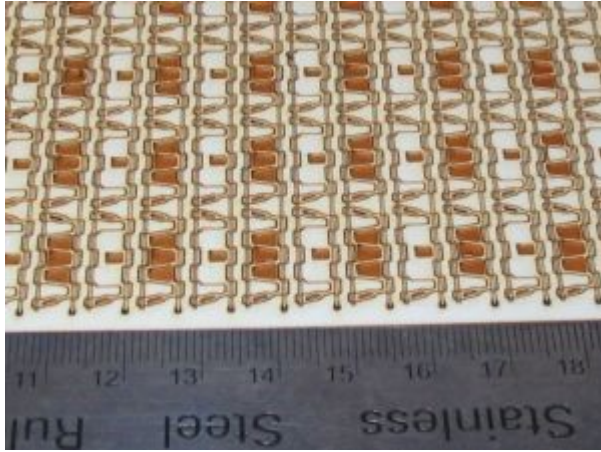
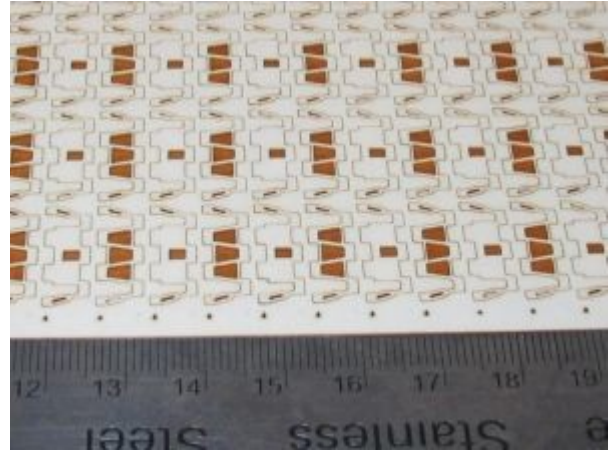


Assembly notes for Pz.Kpfw.3-4

Cut small bridges between parts and rest of the sheet with a sharp knife. I advise to do this from the upper (laser) side. There are two reasons. First, it is easier as cut is wider from the upper side. Second, small fragments between engraved line (for connecting rod) and part edge could easily be lost otherwise.



Upper (laser) side

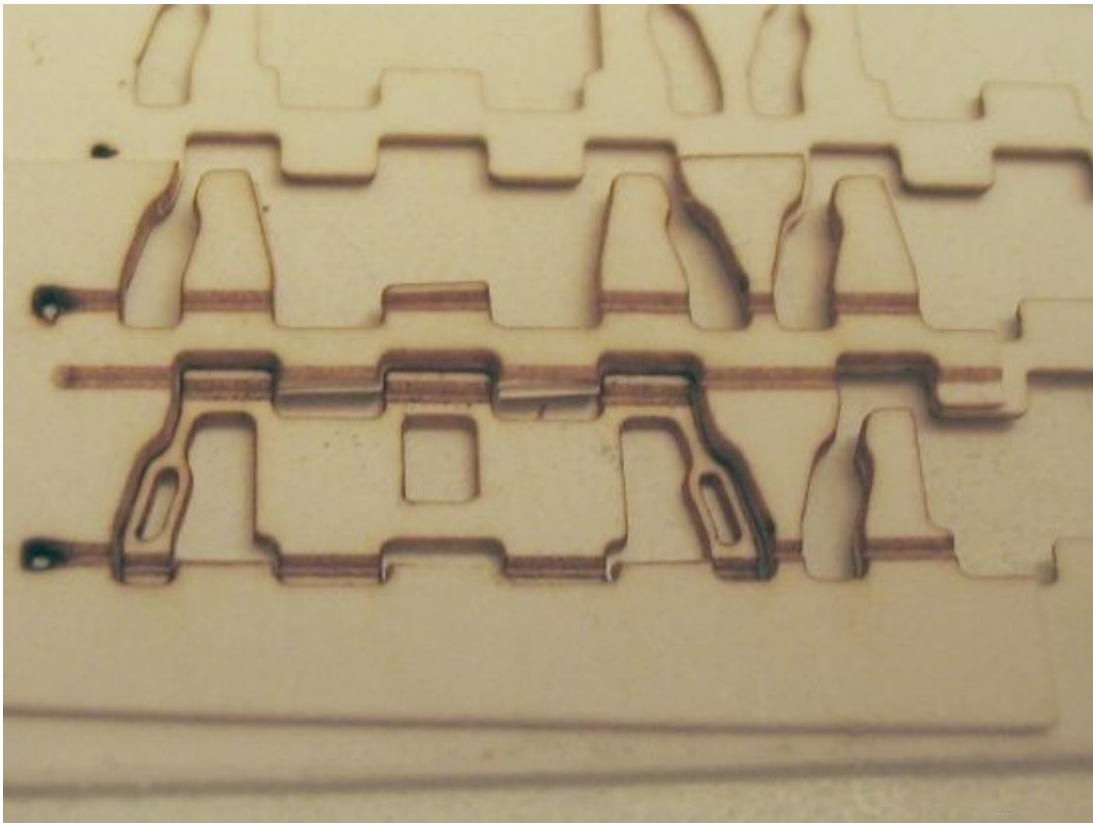


Down side



All parts are separated and ready for gluing.

Before gluing parts together it is useful to create a special template. To make it you need to glue together two area with holes from parts.



Template made from rest of paper sheet.

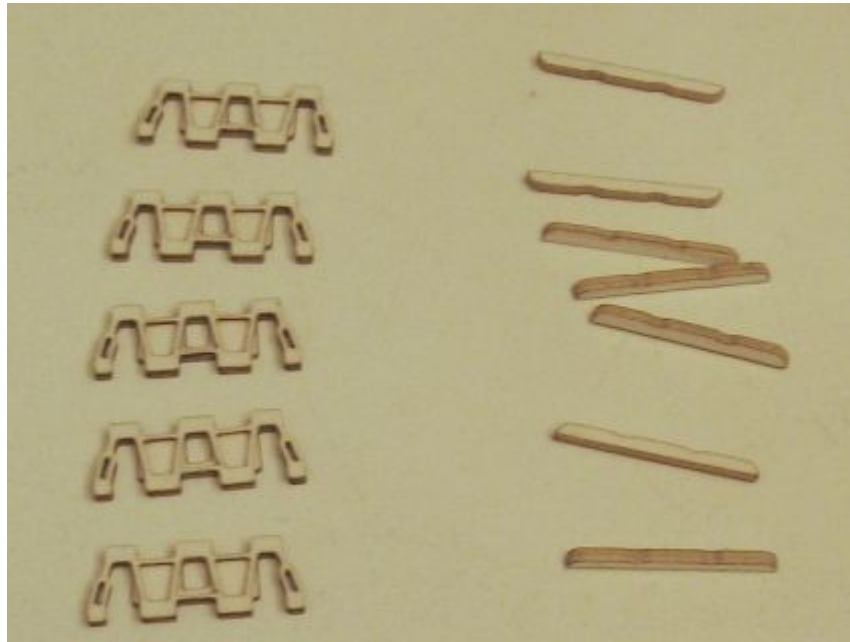
Then it is time to start glue parts together. First, move bottom part of track link into the template. Second, apply glue to top part and move it to the bottom part into template. Third, press firmly and then remove both parts from the template, let them dry.



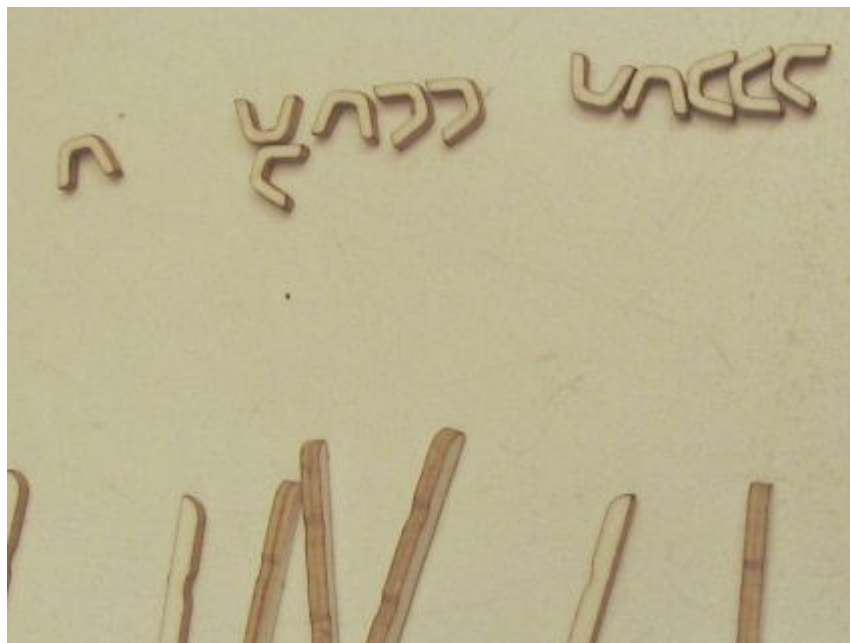
Glued together bottom and top parts of a track link.

In the similar way glue together halves of horns and mud hooks. The only difference is that track links were glued by upper (laser) side, so engraved lines, being connected together,

create a hole for connecting rod. But mud hooks and horn should be glued by their down side.

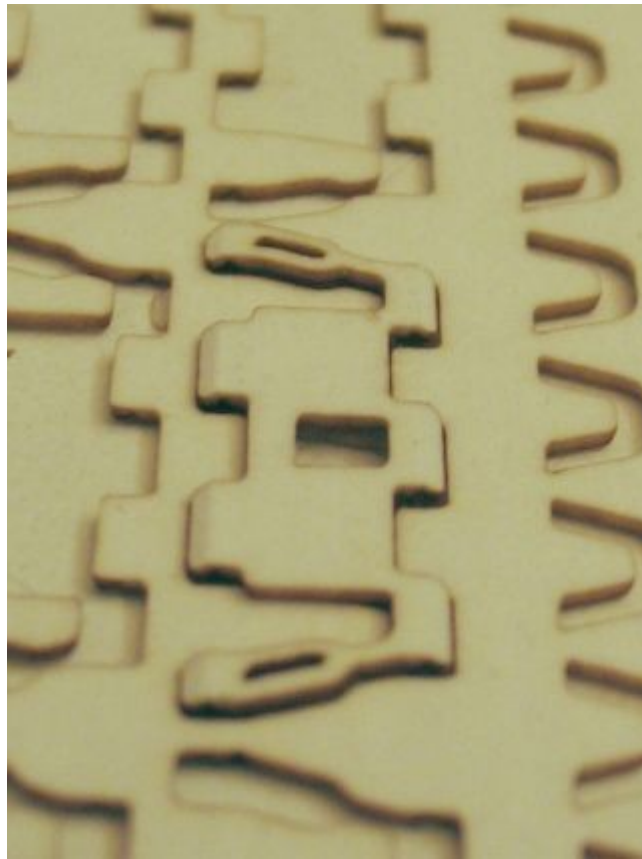


Glued together mud hooks (right) and track links (left).

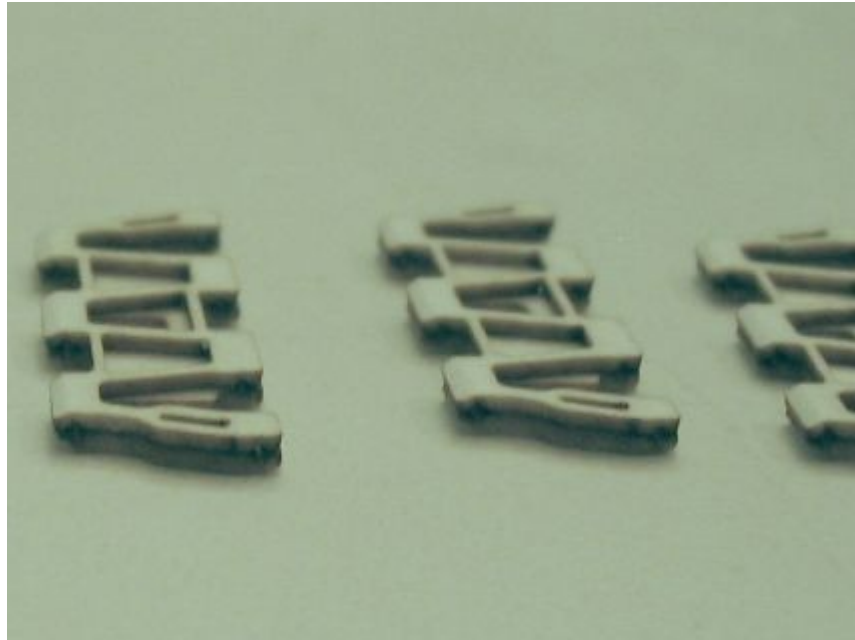


Glued together horns (up).

Now it is time to cut away edges from track links (for simulating their roundness). Again, move track link into template (this time from one layer) and cut away edge a little with 45 degree cut. I did it with wide razor as one movement.

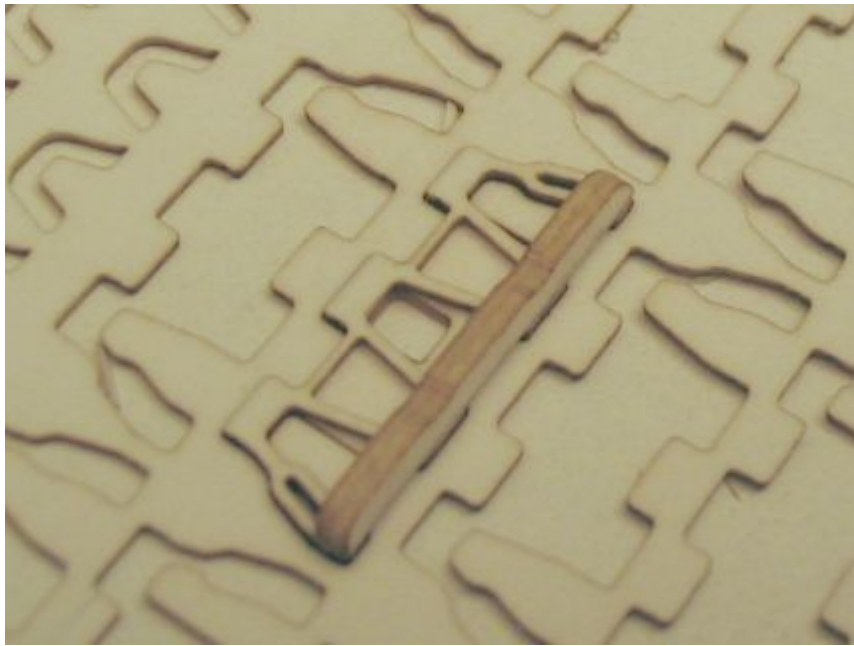


At top surface both edges should be removed.



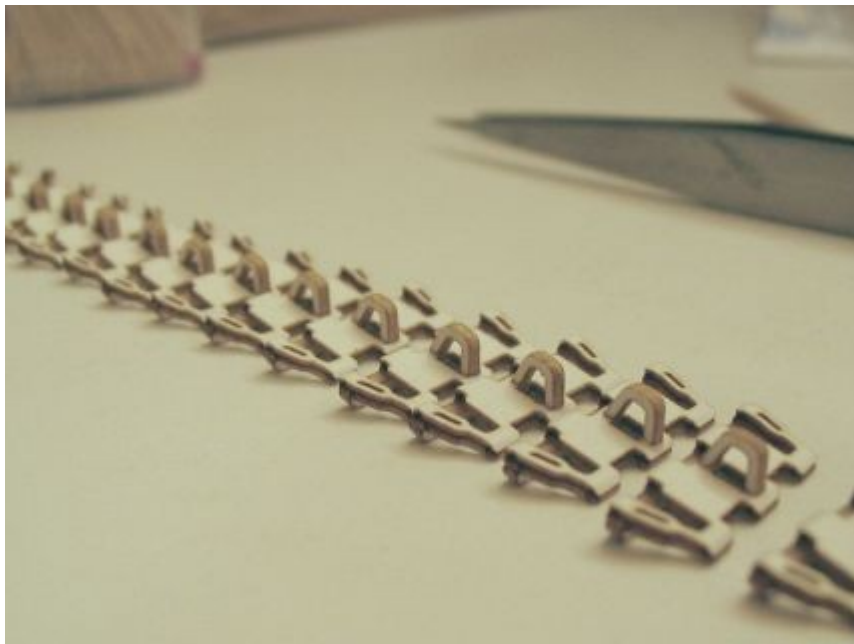
At bottom side only one edge (left on picture) should be removed.

Now it is time to glue mud hooks to the bottom surface. Again, put track link into template (from one layer). This will help you to keep the correct dimensions (width and flatness).



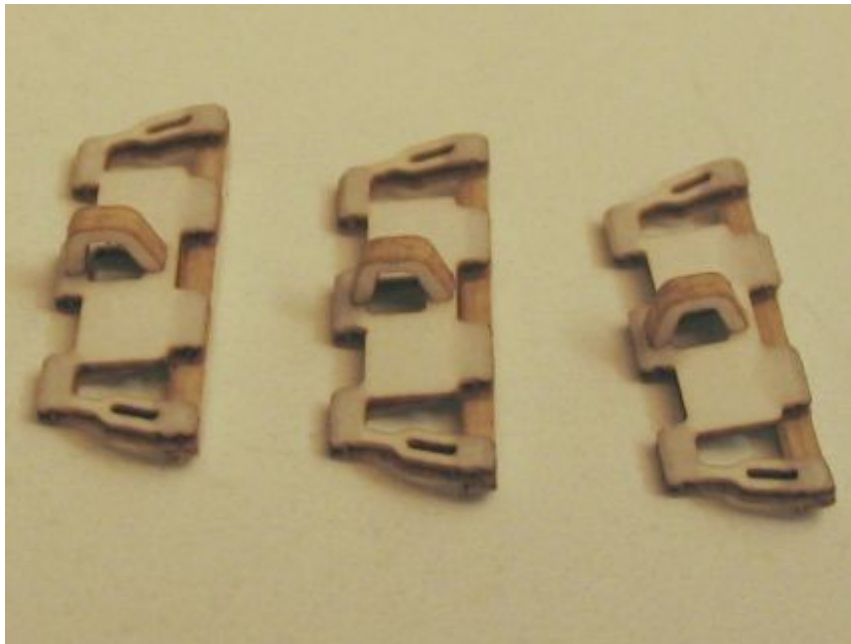
Gluing of a mud hook.

Then glue the horn. It is really very easy.



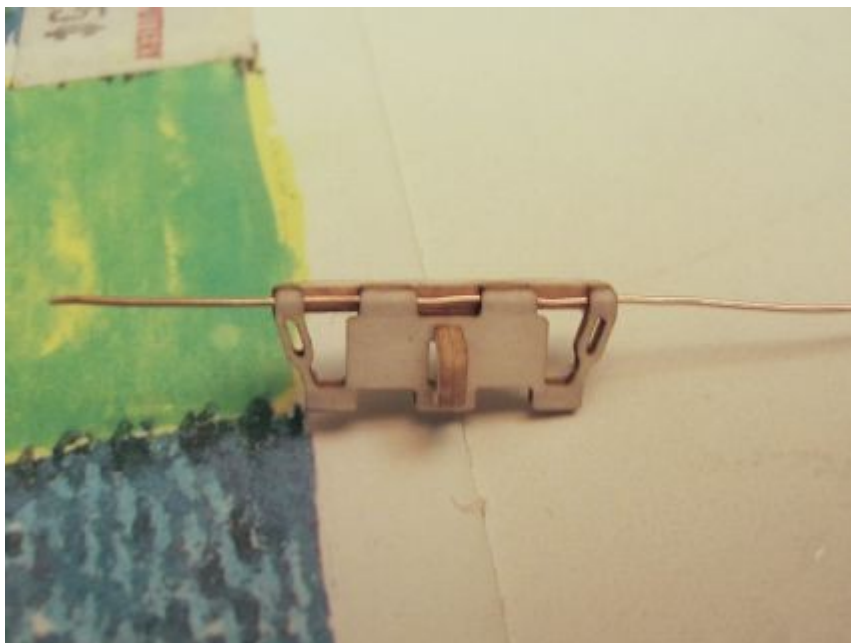
Gluing of a horn.

When everything is dried, cut with knife any remaining unnecessary paper (bridges). Then apply superglue to track links' loops (side with hole for connecting horn) to make them harder.

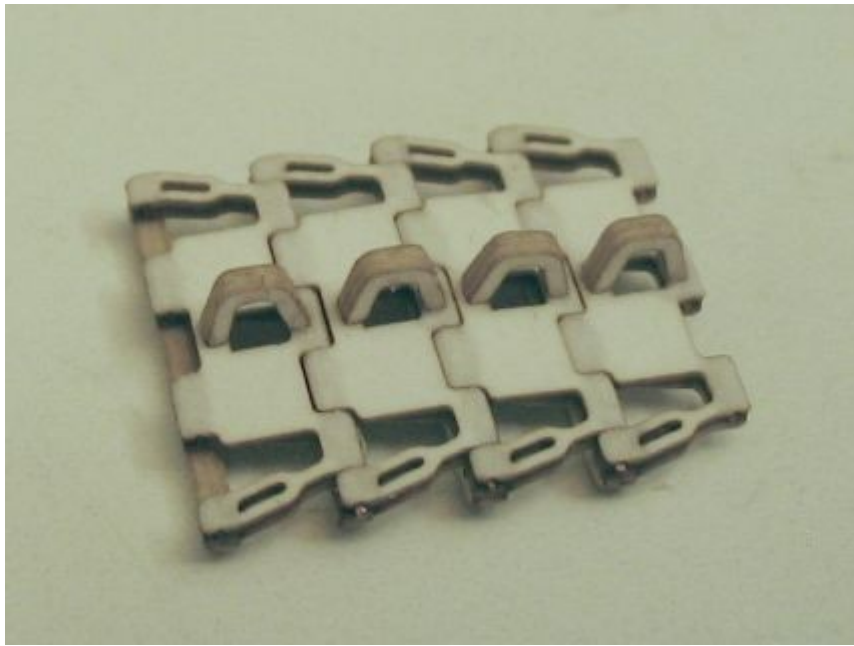


Applying a Superglue to loops (they became gray).

After drying track links are ready for painting.
After painting I advise to clean hole for connecting rod with appropriate diameter drill (or suitable wire), and connect them together with a wire of a little smaller diameter.



Cleaning a hole for connecting rod with a wire.



Well done!!!! Connected track links (but not painted).